

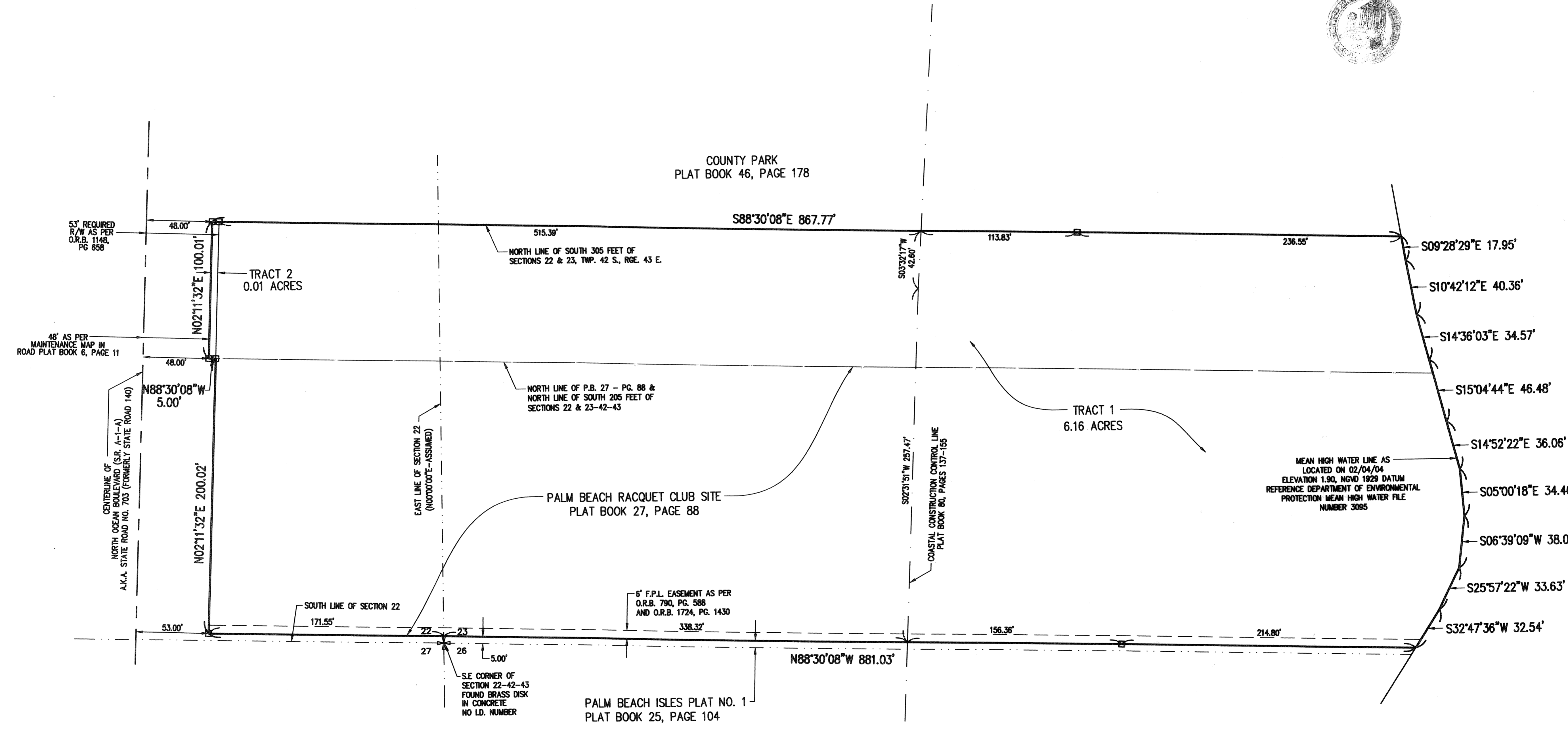
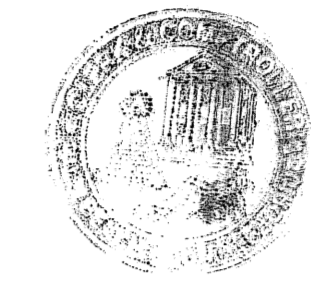
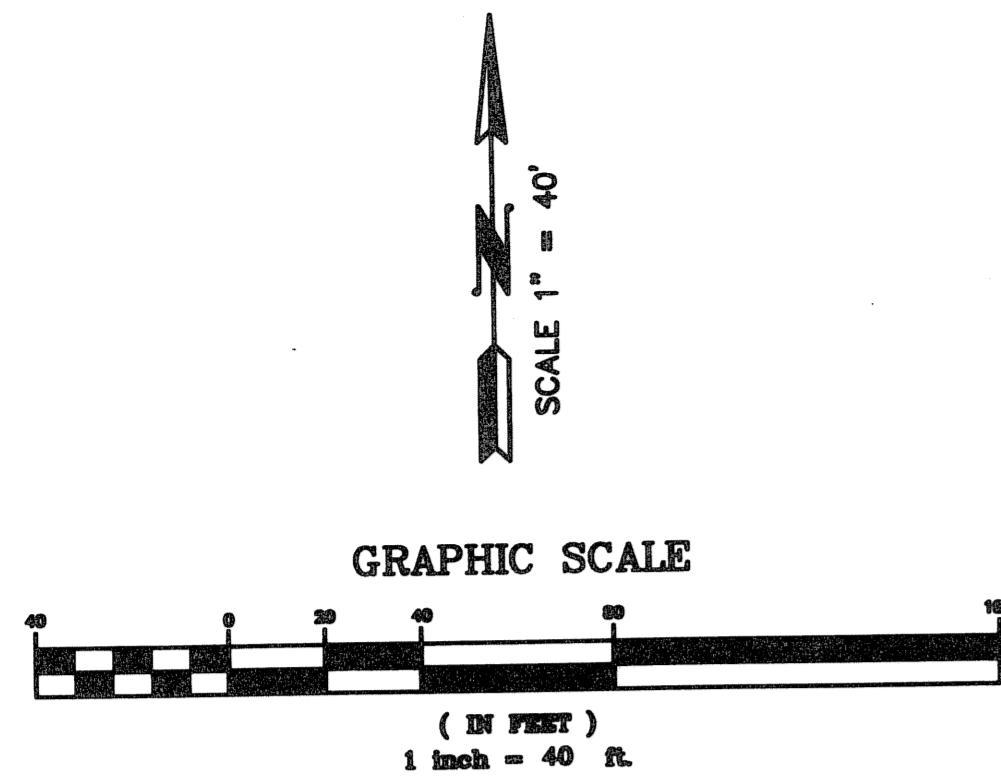
192

# RESORT AT SINGER ISLAND

LYING IN SECTIONS 22 AND 23, TOWNSHIP 42 SOUTH, RANGE 43 EAST  
CITY OF RIVIERA BEACH, PALM BEACH COUNTY, FLORIDA  
AND BEING A REPLAT OF PALM BEACH RACQUET CLUB SITE  
ACCORDING TO THE PLAT THEREOF, AS RECORDED IN PLAT BOOK 27, PAGE 88  
SHEET NO. 2 OF 2

MARCH - 2005

STATE OF FLORIDA  
COUNTY OF PALM BEACH  
This plat was filed for  
record at \_\_\_\_\_ M. this \_\_\_\_\_ day  
of \_\_\_\_\_ 2005, and duly  
recorded in Plat Book No. \_\_\_\_\_  
on Pages \_\_\_\_\_ thru \_\_\_\_\_  
SHARON R. BOCK  
Clerk Circuit Court  
By \_\_\_\_\_ D. C.



LEGEND

⊕	CENTERLINE
D	CENTRAL ANGLE
R	RADIUS
L	ARC LENGTH
CH	CHORD BEARING
O.R.B.	OFFICIAL RECORD BOOK
P.B.	PLAT BOOK
PG.	PAGE
R/W	RIGHT-OF-WAY
S.R.	STATE ROAD
N.G.V.D.	NATIONAL GEODETIC VERTICAL DATUM
PRM	PERMANENT REFERENCE MONUMENT
I.D.	IDENTIFICATION NUMBER
■	PERMANENT REFERENCE MONUMENT FOUND
□	PERMANENT REFERENCE MONUMENT SET
⊠	(4" X 4" CONCRETE MONUMENT WITH ALUMINUM DISK STAMPED "BETSY LINDSAY, INC." - LB6852)

COMPUTED JAD  
DRAWN JAD  
CHECKED \_\_\_\_\_  
APPROVED \_\_\_\_\_  
JOB NO. 182761

THIS INSTRUMENT PREPARED BY:  
Elizabeth A. Lindsay, P.S.M.  
Professional Surveyor and Mapper  
Florida License Number LS4724  
BETSY LINDSAY, INC.  
208 North U.S. 1, # 8  
Tequesta, Florida 33469  
Certificate of Authorization Number LB6852

Dolphin Projects\WatermarkCommunities\182761-RS\PLAT\ResortMap.Dwg